

Rev	Date	Notes
A	24.07.23	PLANNING ISSUE

General Notes

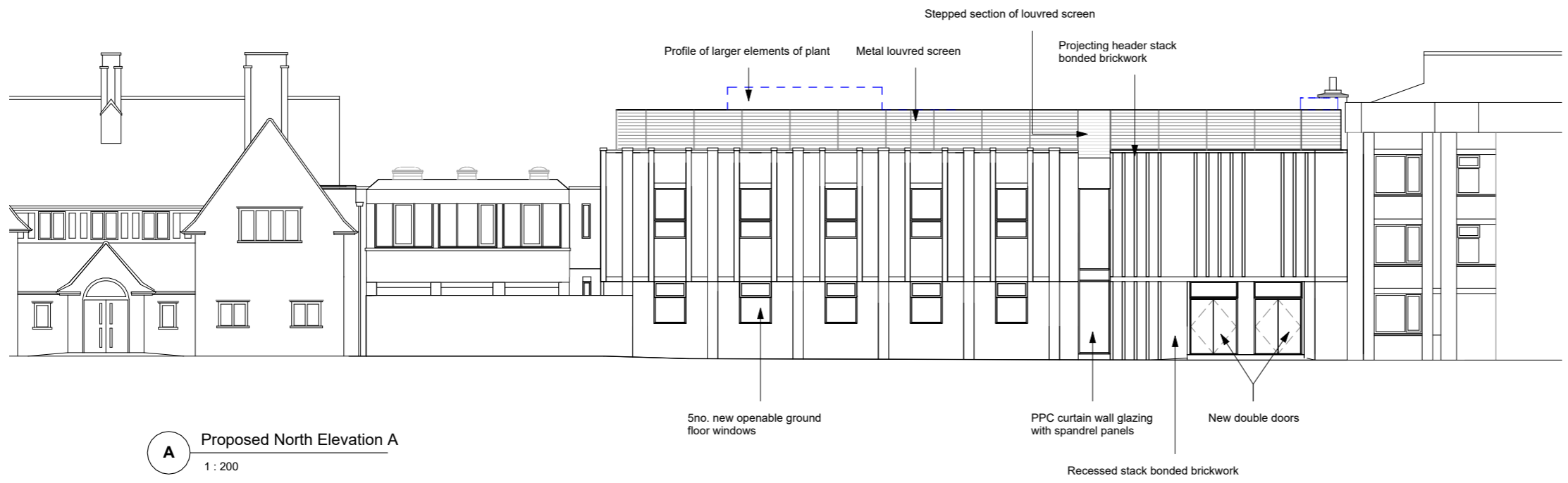
Key

Existing wall

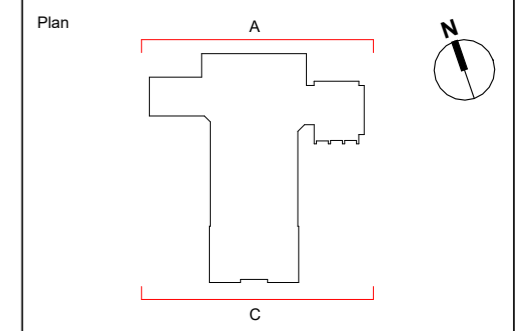
Proposed wall

Existing plans, sections and elevations of Wolfson College are based on the measured survey by Sunshine Surveys in May 2023.

Neighbouring buildings are based on measured survey from Sunshine Surveys in May 2023.



A Proposed North Elevation A
1 : 200



Notes

Do not scale from drawing. Discrepancies to be brought to the attention of the author. Not for construction.

Electronic drawings are uncontrolled documents and are issued for information only. Any dimensions not nominated must be referred to the author for confirmation.

© Owers Warwick Architects Ltd
This document should not be relied on or used in circumstances other than those for which it was originally prepared and for which Owers Warwick Architects Ltd were commissioned.

Status

Planning

Project

Wolfson College
Wolfson College, Cambridge

Title

GA Proposed Elevations - North and South

Drawing No.

2669- P30-01

Scale

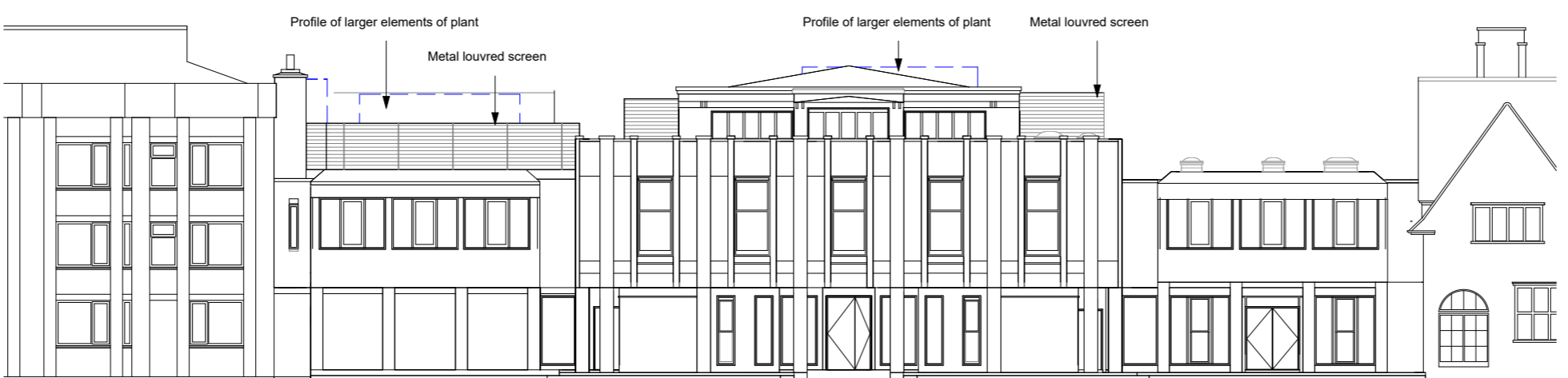
1 : 200 @ A3

ARCHITECTS

OWERS WARWICK

13-15 Covent Garden | Cambridge | CB1 2HS

www.owersarchitects.com | design@owersarchitects.com | 01223 464455



C Proposed South Elevation C
1 : 200

NOTE: Plant shown indicatively to illustrate likely maximum heights. Refer to MEP Engineer's drawings in the Design and Access Statement for further information. The higher elements of plant, have been located to ensure minimal visibility from the surroundings

