




Wolfson College
Cambridge

A group of people, including students and staff, are standing outdoors in front of a stone gate. They are wearing academic regalia, including black gowns and white shirts. The background shows a large green tree and a stone wall.

Be part of Wolfson's future
with a legacy gift



The Bursar Joanna Cheffins

Prior to joining Wolfson in 2019, Jo was Joint Head of the University Legal Services Office. Jo practised law in the UK and Canada and established the University's first in-house legal service.

What will your legacy be?

In the context of the University of Cambridge, Wolfson College is still young, but we have achieved much since our foundation in 1965. Today, Wolfson is firmly established as a unique, pioneering college within the University.

As you know, we have always been a place for brilliant people of all disciplines, genders, ages, nationalities, and backgrounds to come together and learn to see the world in a different way. Wolfson still has one of the most international and diverse student bodies in Cambridge, being home to students from nearly a hundred countries. We offer every member of our community the opportunity to fulfil their potential and transform society for the good of all through education and research.

To continue to do so, and to achieve our ambitious plans for the future, we rely on the generosity of our members.

By leaving a gift in your Will to Wolfson, you can directly support our values of excellence in education and equality of opportunity for all.

Wolfson's legacies to you are the amazing memories, the friendships, the learning, and the opportunities you have enjoyed because you have been part of this College. Your legacy to the future of Wolfson could be to help us continue to support generations of scholars discover ideas and do the profound work that improves lives all around the world.



How your gift will help

Pledging a legacy to Wolfson will cost you nothing today, but it will leave a lasting impact on future generations of students and researchers.

Legacy gifts have touched every aspect of life at Wolfson. With their help, we have:

- Offered financial support to students and researchers
- Funded academic skills programmes and prizes
- Supported students' interests in sport, music, and art
- Provided resources to support the welfare of Wolfson members
- Invested in new strategic projects
- Refurbished facilities and improved energy efficiency



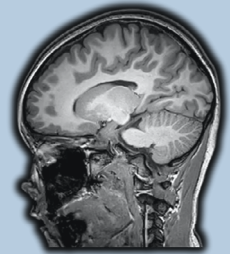
Legacy Beneficiary

PhD candidate Cleo Valentine is the recipient of a legacy left by one of our first Fellows, Mary Hesse.

Cleo's research explores the effects of architectural forms on stress-mediated neuroinflammation – a cutting-edge interrogation of the effects of our built environment on our health.

As the only Cambridge student supervised between the Department of Architecture and the Computational Neuroscience Group, her research is uniquely interdisciplinary and original.

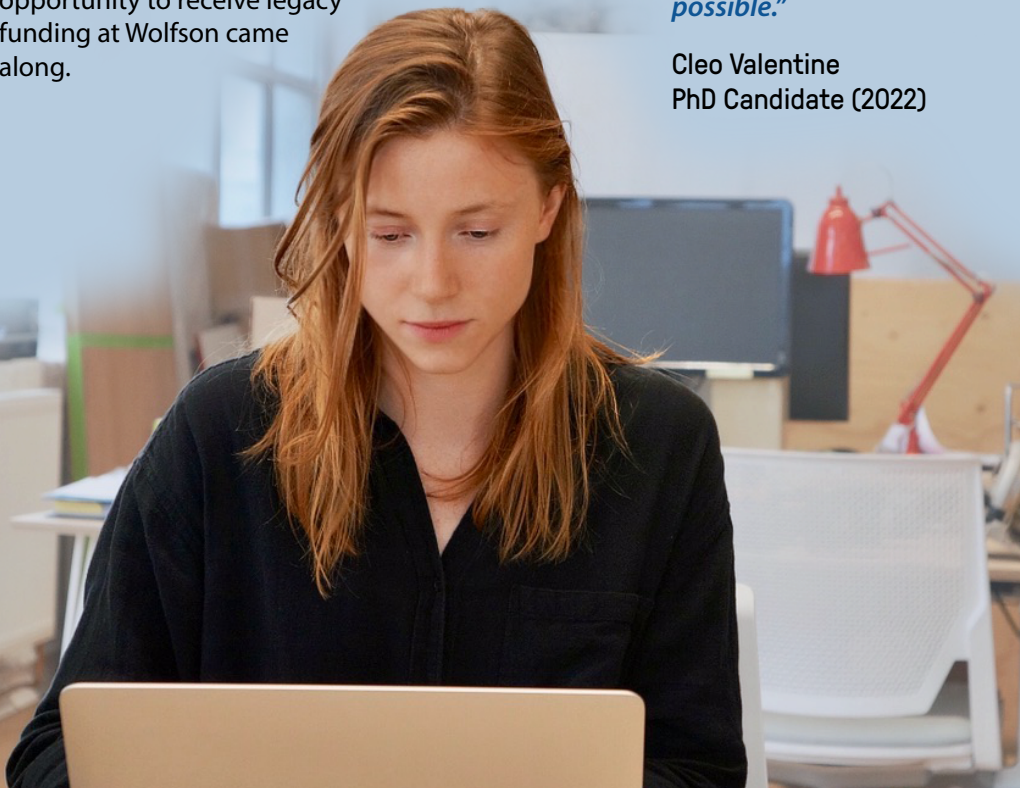
So original, in fact, that it didn't tick the boxes for any one conventional source of funding. With time running out for funding, Cleo felt that she might not be able to undertake her project after all – until the opportunity to receive legacy funding at Wolfson came along.



Cleo uses brain scans in her research

“Without the generous support of Mary Hesse’s legacy,” says Cleo, “my pursuit of a PhD simply would not have been possible.”

Cleo Valentine
PhD Candidate (2022)



Legacy Donor

// I came to Wolfson College as an undergraduate reading History (at the age of 46), in 2008. Wolfson was the most friendly, welcoming place imaginable. I met many lovely and fascinating people and have made lasting friendships despite disparities of age and geography. I developed intellectually more than I could have imagined, and I had the best three years of my life at Wolfson.

This means that **it was a natural decision to leave a legacy in my will to benefit future generations of Wolfson students**, particularly those who would not be able to come to Cambridge without financial assistance.

It was very easy to work with the College to ask for specific bequests such as establishing a fund for a PhD student or setting money aside for buildings, and **it was straightforward to incorporate the legacy into my Will.** //

Charles Reese, BA History (2008)



Tax relief and benefits of a legacy gift to Wolfson

- Your legacy gift will be tax-exempt and may reduce your inheritance tax liability.
- By letting us know about your pledge, we can invite you to become a member of the Wolfson College Morrison Society: your name will be printed each year in our annual College magazine, The Wolfson Review, and you will be invited to the annual Morrison Society lunch.





How to leave Wolfson a gift in your Will

A Will ensures that your estate is passed on in line with your wishes. It allows you to provide for the people and causes you care most about with a legacy, one of the most meaningful gifts you can make.

- Arranging or updating a Will can be very straightforward. We recommend using a qualified solicitor to ensure your Will is valid.
- You may choose to nominate a part of College life you wish to support; however, an unrestricted bequest gives Wolfson the flexibility to invest wisely for the future. We are very happy to discuss any specific wishes you have, to ensure the wording of your legacy to Wolfson remains relevant and can be put to the best possible use.
- Any gift, large or small, will make a real difference to Wolfson in our mission to provide the best possible environment for learning, teaching, and research.
- Make your gift to 'Wolfson College, Cambridge (England and Wales registered charity number 1138143)'

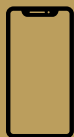
A suggested form of wording for a Will or Codicil

'I give to the President and Fellows of Wolfson College, Cambridge CB3 9BB United Kingdom (Charity Number 1138143) the residue / a proportion of the residue of my estate / the sum of £ [amount] free of tax for the general purposes of the College and I declare that the receipt of the Bursar or other authorised Officer for the time being of the College shall be good and sufficient discharge to my executors.'



Next steps

1



Get in touch with Wolfson

If you are thinking of leaving a gift to Wolfson College in your Will, please do get in touch with us. We would be very happy to talk with you about your intentions, though we are not able to offer legal or financial advice.

Contact us at legacies@wolfson.cam.ac.uk or on +44 (0) 1223 766856 to start a conversation about your legacy.

2



Consult your solicitor or other professional advisor

Whenever you are ready to proceed with writing a legacy to Wolfson into your Will, we suggest that you consult your solicitor, who will be able to advise you on the next steps. Please note that a legacy to the College should refer to: 'Wolfson College, Cambridge'

3



Let us know that you have pledged to be part of our future

If you have decided to leave a gift to Wolfson in your Will, please complete, detach and return the Pledge Form overleaf or to indicate that you have made, or intend to make, a legacy gift to Wolfson. This will offer us the opportunity to honour your gift in your lifetime, and to plan for the College's future.



Legacy Pledge Form

If you have included Wolfson in your Will, or are intending to, please let us know by completing and returning this form, or the online version available at wolfson.cam.ac.uk/legacy-form

This is not a binding document: it is simply a statement of your present intentions and assists the College in its long-term planning. It also enables us to show gratitude for your generosity now through membership of the Morrison Society.



Full name

Address

Phone

Email

- ☐ **I have included** a legacy to Wolfson College in my Will with:
- ☐ **I intend to include** a legacy to Wolfson College in my Will with:

☐ a specific amount of £

☐ a residuary gift of % of my estate

and the estimated value of my legacy in today's terms is

£

☐ other (please specify)

Comments: